

New localities of protected lichen species on the Salair Ridge in Altai Territory

Evgeny A. Davydov^{1,2}, Lole Y. Smirnova², Yulia V. Storozhenko¹,
Maria V. Zyatnina¹, Polina Y. Ryzhkova¹, Lidia S. Yakovchenko³

1 Altai State University, 61 Lenina Ave, Barnaul, 656049, Russia

2 Tigirek State Nature Reserve, 111 Nikitina st., Barnaul, 656043, Russia

3 Federal Scientific Center of the East Asia Terrestrial Biodiversity FEB RAS, 159 100th anniversary of
Vladivostok Avenue, Vladivostok 690022, Russia

Corresponding author: Evgeny A. Davydov (eadavydov@yandex.ru)

Academic editor: R. Yakovlev | Received 9 November 2021 | Accepted 20 December 2021 | Published 7 May 2022

<http://zoobank.org/9CE17287-6FF0-44E4-9C64-359F873A1889>

Citation: Davydov EA, Smirnova LY, Storozhenko YuV, Zyatnina MV, Ryzhkova PY, Yakovchenko LS (2022) New localities of protected lichen species on the Salair Ridge in Altai Territory. Acta Biologica Sibirica 8: 143–153. <https://doi.org/10.14258/abs.v8.e06>

Abstract

New localities of eight lichen species included in the Red Data Book of the Altai Territory, *Lobaria pulmonaria*, *Ramalina roesleri*, *R. sinensis*, *Graphis scripta*, *Heterodermia speciosa*, *Nephroma bellum*, *Ramalina vogulica*, and *Usnea longissima* are reported for the Salair Ridge. The last five species recorded to the Salair Ridge within Altai Territory for the first time. Localities and ecological preferences are indicated for each species.

Keywords

Biodiversity, lichenized fungus, Red Data Book, Salair National Park

Introduction

The Salair Ridge is a low-mountain area in the northwest of the Altai-Sayan mountain system with an area of 22,500 km² with average elevations of 400–600 m and the highest mountain – Mt. Kivda, 621 m a.s.l. (Lashchinskiy et al. 2007). Administratively, the territory of the Ridge is located at the border of Kemerovo, Novosibirsk

Regions, and the Altai Territory. Lichen flora of the Salair Ridge includes 673 species (Sedelnikova 2007), but only about one hundred of species were reported for the Salair botanical-geographical area ("Salair and Predsalairye" in Silantieva 2013) of the Altai Territory (Davydov 1999, 2004, 2014; Davydov and Konoreva 2017; Konoreva et al. 2016; Stas' 1999; Vondrák et al. 2016, 2019).

The new edition of the Red Data Book of the Altai Territory (Shmakov and Silantieva 2016) includes 23 species of lichens, and only 3 of them, namely *Lobaria pulmonaria* (L.) Hoffm., *Ramalina roesleri* (Schaer.) Hue and *Ramalina sinensis* Jatta were recorded from Salair Ridge (Davydov 2016). Recently we reported the data on the population density of protected lichens in forests with spruce, fir and Siberian pine, as well as linden forests on the Salair Ridge within Altai Territory (Davydov et al. 2020, 2021), but localities of the species remain without adequate documentation in the scientific literature. Here we amend this inaccuracy and discuss the occurrences of protected lichens on the Salair Range in detail.

Material and methods

Field observations were made in Eltsovsky, Togulsky and Zarinsky Districts of the Altai Territory during 2019–2021. Voucher specimens of every species of protected lichen were collected by authors and deposited in the herbarium of the Altai State University (ALTB). Morphological observations were made using a stereomicroscope Zeiss Stemi 2000-C. Cross-sections of apothecia and thalli were made by hand with a razor blade and observed with a Zeiss Axio Lab.A1 compound microscope after mounting in water. Lichen substances of some species were studied by spot-tests using potassium hydroxide solution (K), sodium hypochlorite solution (C), 1,4-p-phenylenediamine (PD), and iodine (I) (Orange et al. 2001).

Results

Graphis scripta (L.) Ach.

Graphis scripta is common in forests dominated by *Tilia sibirica* and relatively rare in *Abies sibirica* forests and secondary (logged) stands. It grows on a smooth bark of *Abies sibirica* Ledeb., *Caragana arborescens* Lam., *Padus avium* Mill., *Sorbus sibirica* Nakai, and *Tilia sibirica* Bayer from 0.5 to 3 m above the ground.

New localities: Altai Territory, Togulsky District: 53°41.87'N, 85°59.63'E; 53°41.87'N, 85°59.82'E; 53°41.84'N, 85°59.81'E; 53°41.89'N, 85°59.92'E; 53°41.92'N, 85°59.69'E; 53°41.96'N, 85°59.72'E; 53°41.97'N, 85°59.82'E; 53°41.97'N, 85°59.91'E; 53°42.22'N, 85°59.91'E; 53°42.95'N, 85°59.87'E; 53°41.85'N, 86°00.63'E; 53°41.93'N, 85°59.96'E; 53°41.99'N, 85°59.97'E; 53°41.98'N, 86°00.13'E; 53°41.91'N, 85°59.58'E; 53°41.98'N, 85°59.59'E; 53°42.20'N, 85°59.81'E; 53°42.11'N, 85°59.82'E; 53°42.13'N,

85°59.74'E; 53°42.15'N, 85°59.65'E; 53°42.65'N, 85°59.64'E; 53°41.85'N, 85°59.70'E; 53°34.32'N, 86°07.45'E; 53°33.78'N, 86°08.58'E; 53°33.69'N, 86°08.68'E; Zarinsky District: 53°55.53'N, 85°53.26'E; 53°56.89'N, 85°52.88'E; 53°56.13'N, 85°52.98'E; 53°55.38'N, 85°53.30'E; 53°56.16'N, 85°53.21'E; 54°00.93'N, 85°54.60' E (Fig. 1).

Heterodermia speciosa (Wulfen) Trevis.

A rare species was found in *Tilia sibirica* forests on *Tilia sibirica*. The maximum abundance is recorded in lichen communities with participation of *Lobaria pulmonaria*.

New localities: Altai Territory, Togul District: 53°41.84'N, 85°59.49'E; 53°41.85'N, 85°59.81'E; 53°41.97'N, 85°59.83'E; 53°41.9'N, 85°59.96'E; 53°42.00'N, 85°59.97'E; 53°41.86'N, 85°59.57'E; 53°41.91'N, 85°59.58'E; 53°41.98'N, 85°59.59'E; 53°41.85'N, 85°59.70' E (Fig. 2).

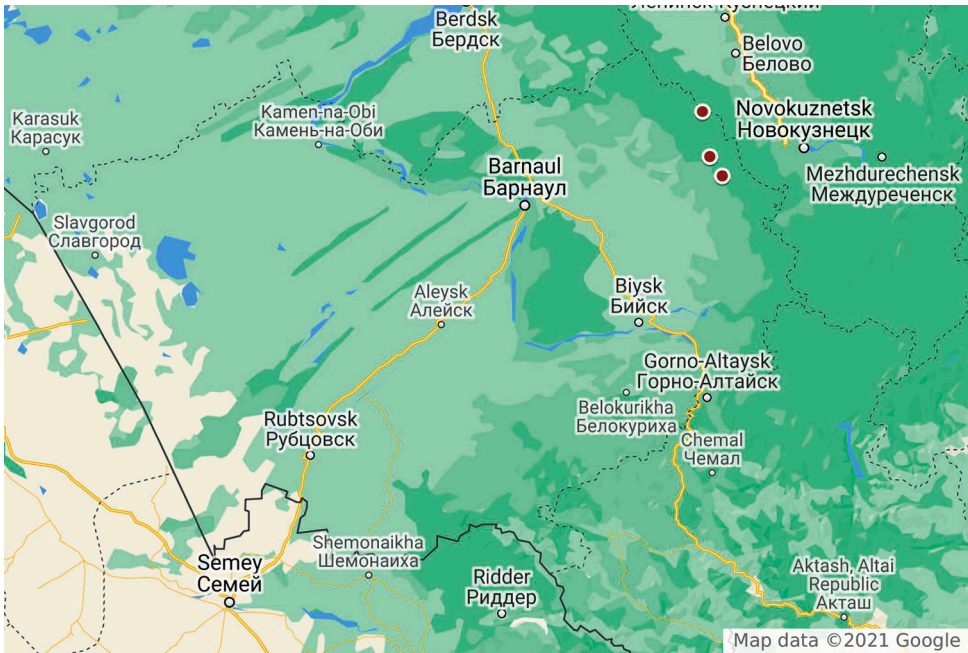


Figure 1. New localities of *Graphis scripta* in Altai Territory (red dots).

Lobaria pulmonaria (L.) Hoffm.

A rare species that grows on *Salix* sp., *Sorbus sibirica*, *Tilia sibirica*, *Betula pendula*, and was once observed on rock outcrops. It is found in *Salix*-dominated valley forests, as well as in *Tilia sibirica* and *Abies sibirica* stands.

New localities: Altai Territory, Togul District: 53°41.97'N, 85°59.83'E; 53°42.22'N, 85°59.90'E; 53°41.98'N, 85°59.59'E; 53°55.46'N, 85°52.96'E; 53°55.99'N, 85°52.94'E; 53°55.64'N, 85°53.13'E; 53°55.86'N, 85°52.75'E; 53°56.55'N, 85°52.30'E; 53°56.70'N, 85°53.70'E; 53°55.82'N, 85°52.50'E; 53°55.34'N, 85°53.39'E; 53°55.53'N, 85°53.35'E; 53°55.89'N, 85°52.75'E. Zarinsky District: 53°57.48'N, 85°48.55'E (Fig. 3).

***Nephroma bellum* (Spreng.) Tuck.**

Nephroma bellum is a very rare species found in Salair only twice, on *Salix* sp. in an *Abies sibirica* forest and on *Tilia sibirica* in a *Tilia sibirica* forest together with *Lobaria pulmonaria*.

New localities: Altai Territory, Togul District: 53°41.97'N, 85°59.83'E. Zarinsky District: 53°57.48'N, 85°48.55' E (Fig. 4).

***Ramalina roesleri* (Schaer.) Hue**

Ramalina roesleri is common within the area, but having different abundance in various types of forests. It grows on bark and twigs of *Abies sibirica*, *Picea obovata*, *Sorbus sibirica*, *Tilia sibirica*, *Populus tremula*, *Salix* sp., and *Betula pubescens* at the altitude from 0.5 to 5 m above the ground. The species is most abundant on dry twigs of *Abies sibirica*, *Tilia sibirica*, and *Picea obovata*.

New localities: Altai Territory, Eltsovsky District: 53°18.95'N, 86°47.87'E; 53°17.68'N, 86°27.74'E; 53°17.15'N, 86°27.54'E. Togulsky District: 53°41.84'N, 85°59.49'E; 53°41.87'N, 85°59.63'E; 53°41.87'N, 85°59.82'E; 53°41.85'N, 85°59.81'E; 53°41.89'N, 85°59.92'E; 53°41.92'N, 85°59.69'E; 53°41.96'N, 85°59.72'E; 53°41.97'N, 85°59.83'E; 53°41.97'N, 85°59.91'E; 53°42.22'N, 85°59.91'E; 53°42.55'N, 85°59.96'E; 53°42.95'N, 85°59.87'E; 53°41.85'N, 86°00.63'E; 53°41.93'N, 85°59.96'E; 53°41.99'N, 85°59.97'E; 53°41.98'N, 86°00.13'E; 53°41.86'N, 85°59.57'E; 53°41.90'N, 85°59.58'E; 53°41.98'N, 85°59.59'E; 53°42.20'N, 85°59.81'E; 53°42.11'N, 85°59.82'E; 53°42.13'N, 85°59.74'E; 53°42.15'N, 85°59.65'E; 53°42.65'N, 85°59.64'E; 53°41.85'N, 85°59.70'E; 53°38.54'N, 86°01.63'E; 53°38.51'N, 86°01.64'E; 53°36.88'N, 86°02.23'E; 53°34.32'N, 86°07.43'E; 53°34.55'N, 86°07.23'E; 53°33.69'N, 86°08.80'E. Zarinsky District: 53°55.47'N, 85°52.96'E; 53°56.00'N, 85°52.28'E; 53°56.25'N, 85°52.20'E; 53°55.48'N, 85°52.91'E; 53°56.95'N, 85°52.88'E; 53°56.11'N, 85°53.23'E; 53°55.95'N, 85°52.96'E; 53°55.38'N, 85°53.30'E; 53°55.72'N, 85°52.98'E; 53°55.50'N, 85°53.44'E; 54°01.52'N, 85°53.80'E; 54°00.93'N, 85°54.60'E; 53°55.10'N, 85°52.27'E; 53°55.48'N, 85°53.17'E; 53°55.47'N, 85°52.95' E (Fig. 5).

***Ramalina sinensis* Jatta (*Ramalina asahinana* Zahlbr.)**

Ramalina sinensis is a quite rare species scarcely distributed in Salair and occurring mostly in valley *Salix* forests, *Picea obovata* forests, as well as in *Abies sibirica* and *Tilia sibirica* dominated communities. The species grows on bark of *Populus tremula*, *Salix* sp., *Tilia sibirica*, *Abies sibirica*, and *Picea obovata* from 1 to 5 m above the ground.

New localities: Altai Territory, Eltsovsky District: 53°18.95'N, 86°47.87'E; Togulsky District: 53°41.92'N, 85°59.69'E; 53°41.96'N, 85°59.72'E; 53°41.97'N, 85°59.83'E; 53°42.22'N, 85°59.91'E; 53°41.98'N, 85°59.59'E; 53°42.20'N, 85°59.81'E; 53°42.11'N, 85°59.82'E; 53°42.13'N, 85°59.74'E; 53°42.15'N, 85°59.65'E; 53°36.84'N, 86°02.23'E; 53°34.66'N, 86°07.57'E; 53°34.31'N, 86°07.51'E; Zarinsky District: 53°55.73'N,

85°52.96'E; 53°55.53'N, 85°53.81'E; 53°55.92'N, 85°52.85'E; 54°01.52'N, 85°53.80'E; 54°00.93'N, 85°54.60'E; 53°55.10'N, 85°52.27'E; 53°55.48'N, 85°53.17'E; 53°55.47'N, 85°52.95' E (Fig. 6).

Ramalina vogulica Vainio

Ramalina vogulica is a very rare species scarcely distributed in Salair. Single thalli occasionally found in *Abies sibirica*, *Picea obovata*, *Tilia sibirica*, and *Salix* sp. forests on bark of *Picea obovata*, *Tilia sibirica*, *Populus tremula*, *Salix* sp. and *Abies sibirica*.

New localities: Altai Territory, Togulsky District: 53°41.84'N, 85°59.49'E; 53°41.97'N, 85°59.83'E; 53°42.00'N, 85°59.97'E; 53°42.15'N, 85°59.65'E; 53°33.66'N, 86°08.68'E; Zarinsky District: 53°55.86'N, 85°52.24'E; 53°55.48'N, 85°53.17'E; 53°55.47'N, 85°52.95' E (Fig. 7).

Usnea longissima Ach.

Usnea longissima is a rare species scarcely distributed in *Abies sibirica* and *Picea obovata* forests. The species grows on *Picea obovata*, *Abies sibirica*, and *Betula pubescens*.

New localities: Altai Territory, Zarinsky District: 53°55.48'N, 85°52.97'E; 53°56.66'N, 85°53.16'E; 53°56.11'N, 85°53.21'E; 53°55.27'N, 85°52.59'E; 53°55.85'N, 85°52.15'E; 53°55.85'N, 85°52.40'E; 53°55.87'N, 85°52.53'E; 53°55.87'N, 85°52.44'E; 53°56.70'N, 85°53.69'E; 53°56.36'N, 85°51.98'E; 53°55.47'N, 85°52.95' E (Fig. 8).

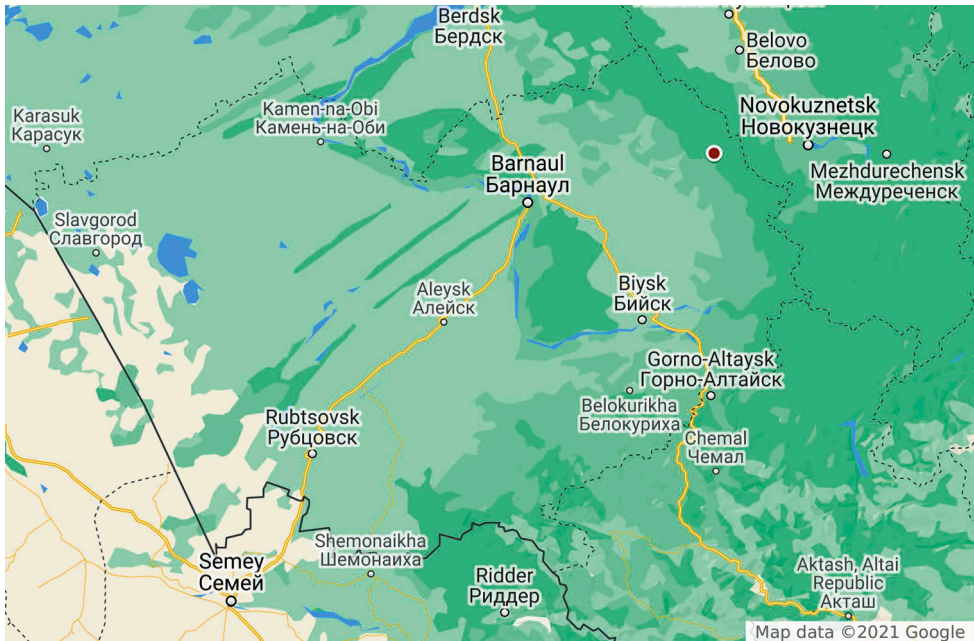


Figure 2. New localities of *Heterodermia speciosa* in Altai Territory (red dot).

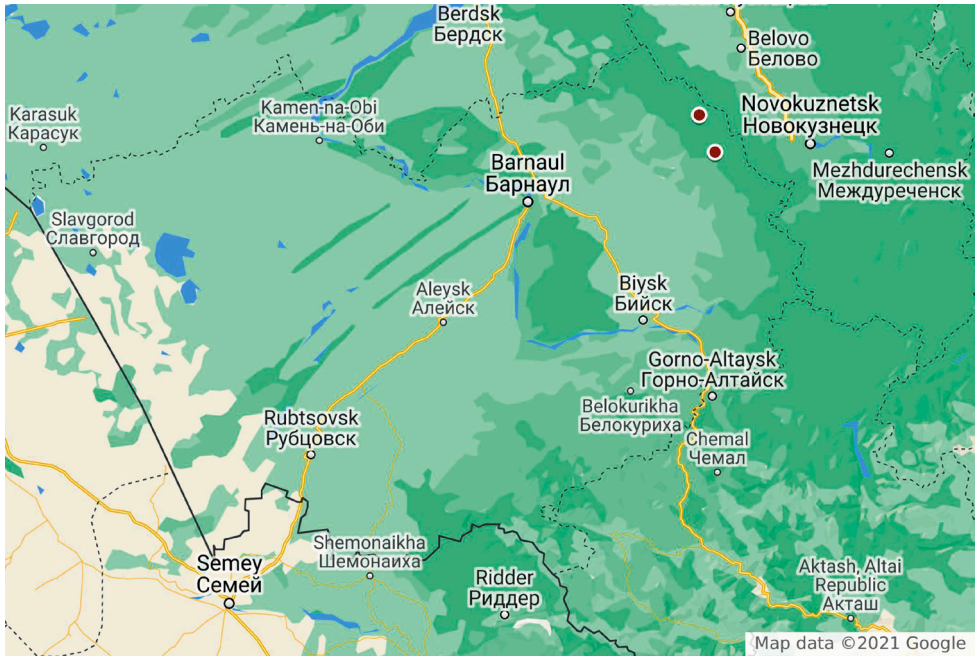


Figure 3. New localities of *Lobaria pulmonaria* in Altai Territory (red dots).

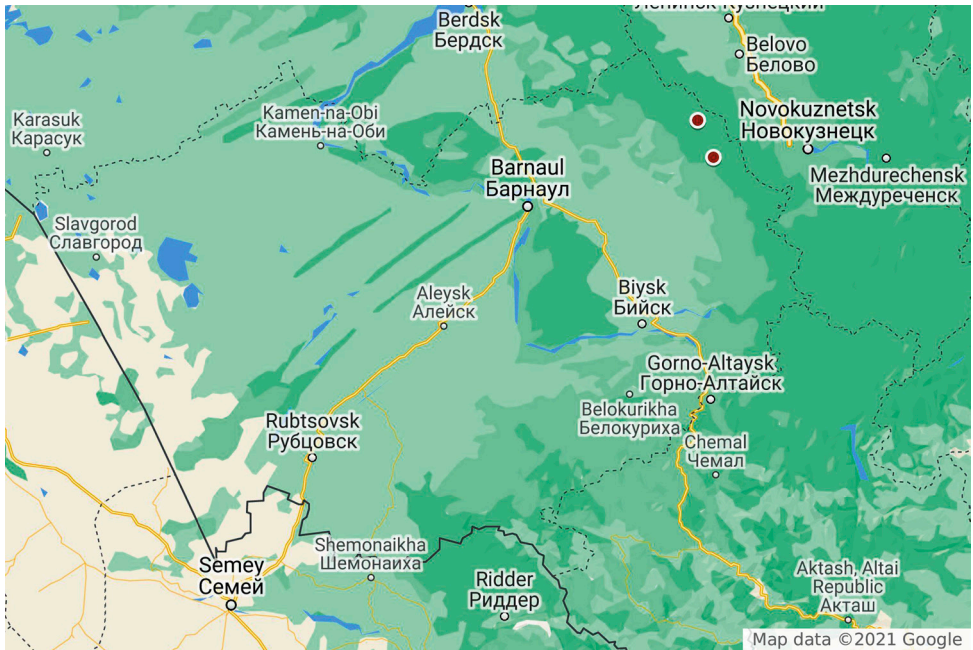


Figure 4. New localities of *Nephroma bellum* in Altai Territory (red dots).

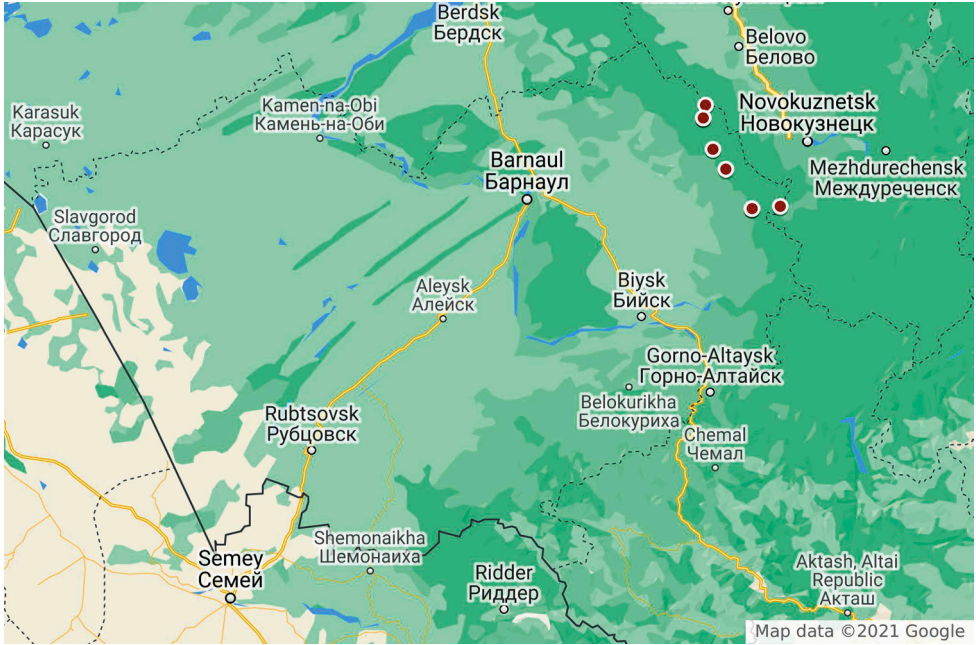


Figure 5. New localities of *Ramalina roesleri* in Altai Territory (red dots).

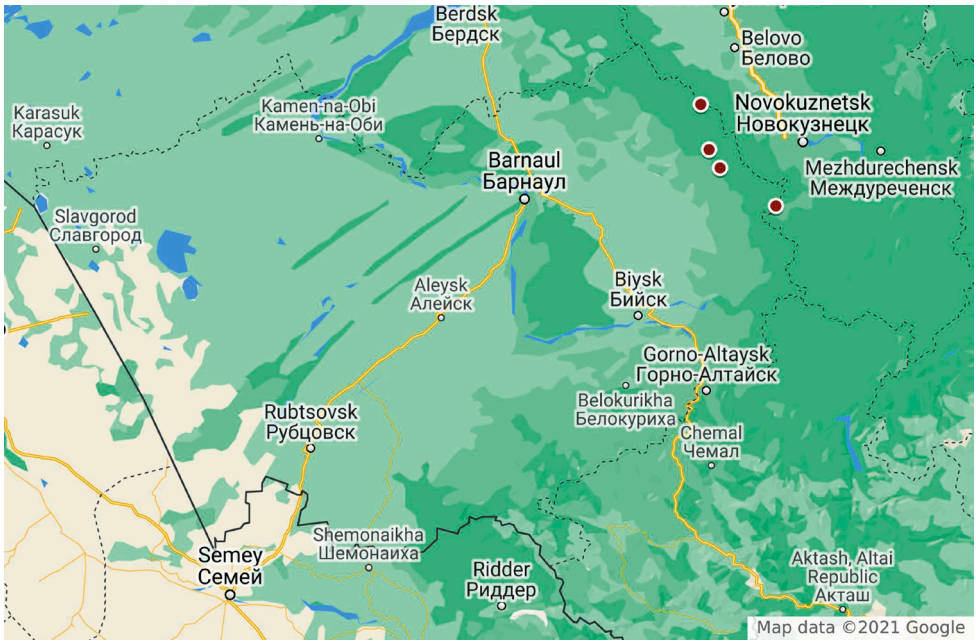


Figure 6. New localities of *Ramalina sinensis* in Altai Territory (red dots).

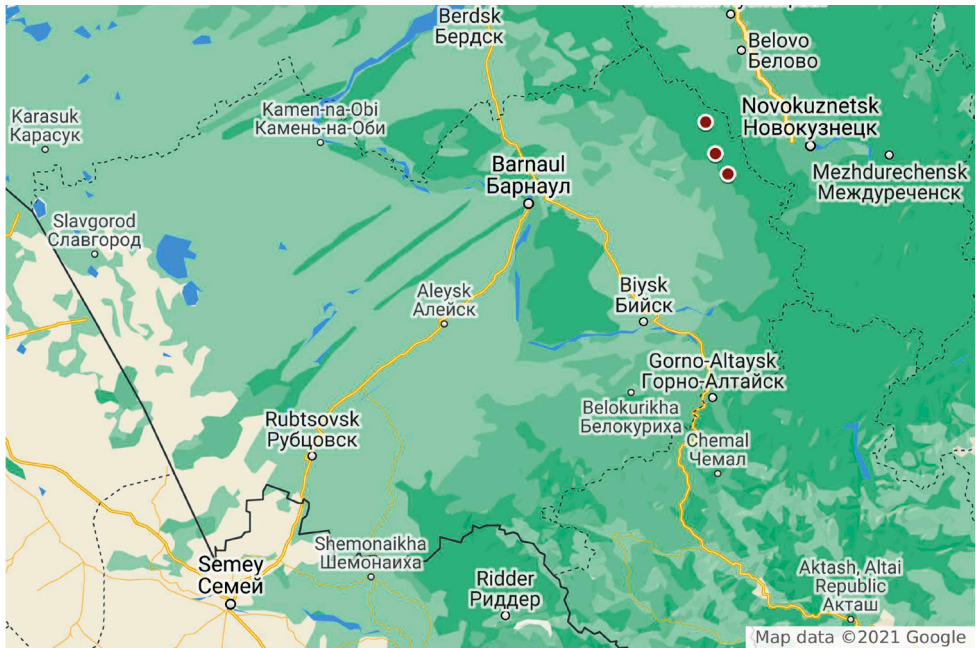


Figure 7. New localities of *Ramalina vogulica* in Altai Territory (red dots).

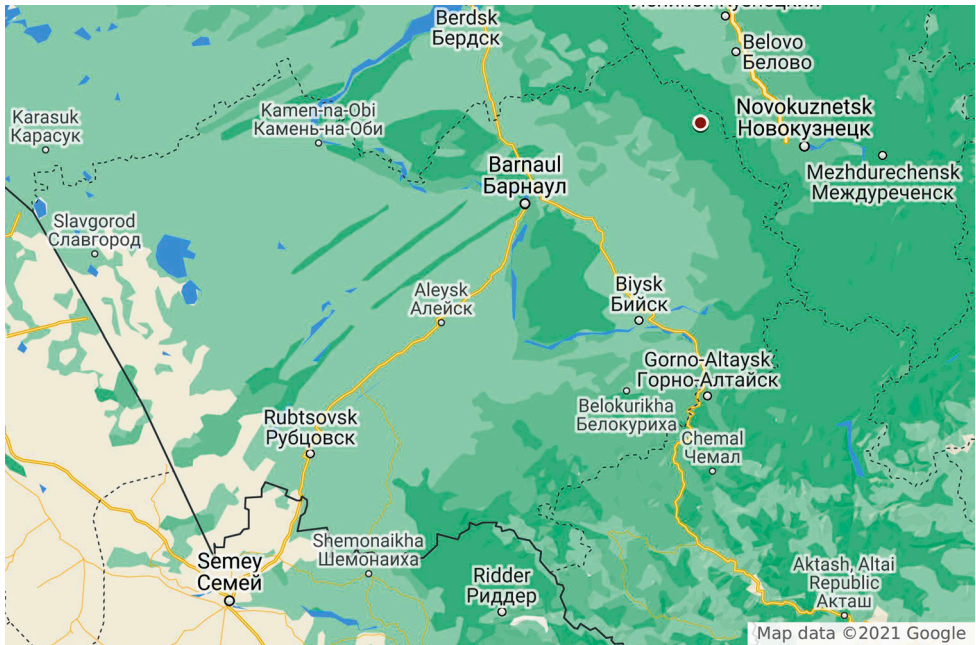


Figure 8. New localities of *Usnea longissima* in Altai Territory (red dots).

Discussion

All reported species were previously known in Altai Territory from North-West and North Altai.

Graphis scripta was previously recorded in North-West Altai where it grows on bark of *Abies sibirica* and *Sorbus sibirica* in *Abies sibirica* forests (Davydov 2001, 2011). In Salair Ridge *Graphis scripta* is a much more common and abundant species.

Heterodermia speciosa was recorded from the North-West Altai where it is most common on rock outcrops in mountain forests, but also inhabits bark of deciduous trees (Davydov 2001, 2008a, 2011).

Lobaria pulmonaria is locally common in the North-West Altai where it grows on *Salix* sp., *Betula* sp. and other deciduous and coniferous trees as well as on mossed rocks (Davydov 1999). In Salair Ridge *Lobaria pulmonaria* is a rare species.

Nephroma bellum was found only in low-mountain *Abies sibirica* forests in the North-West Altai and it is relatively more common in the Altai Mountains compared with the Salair Ridge (Zavarzin and Davydov 2000; Davydov 2001, 2008a, 2011).

Ramalina roesleri is rare in the North-West Altai and recorded from few localities only (Davydov 2016), while it is the most common protected lichen in the Salair Ridge. In the earlier publications (Davydov 1995, 2001) the name *Ramalina roesleri* were erroneously applied to young thalli of *Ramalina dilacerata* (Hoffm.) Hoffm. (Davydov 2011).

Ramalina sinensis grows in the North-West and North Altai in valley *Salix* forests (Davydov 2010; Davydov and Konoreva 2015). The umbilicate morphotype – *Ramalina asahinana* – was recorded in Altai Territory exclusively from Salair and Predsairye (Stas' 1999).

Ramalina vogulica is a very rare both in Salair and the North-West Altai where it was recorded from two close localities in *Salix* valley forest within *Abies sibirica* subnemoral forest (Davydov 2004, 2005).

Usnea longissima is a very rare species in the North-West Altai where it is recorded from two close localities in *Abies sibirica* subnemoral forest (Davydov 2004, 2011).

All protected species of lichens of Altai Territory can be subdivided into two groups according to their ecology and distribution (Davydov 2008b). The majority of species grows in mountain forests of the West and North Altai Mountains and Salair in eastern part of the Altai Territory and five species occur in arid habitats in its south-western part. Eighteen species of 23 were recorded from the West and North Altai. As far as low-mountain area both in West and North Altai, and Salair Ridge are covered mostly by similar types of vegetation, i.e. *Abies sibirica* subnemoral forests and its derivatives, findings of remaining 10 species in Salair Ridge remains is highly likely.

Acknowledgements

The reported study was supported by RFBR and Altai Territory according to the research project № 19–44–220003, and by the Altai State University in the framework of "Priority-2030" Program.

References

- Davydov EA (1995) Annotated list of fruticose and foliose lichens of Northern part of Corgon range (Western Altai). *Flora and vegetation of Altai* 1: 30–34. [In Russian]
- Davydov EA (1999) Lichen from Red data book USSR and Russia *Lobaria pulmonaria* (L.) Hoffm. (Lobariaceae, Lichenes) in Altai region. *Flora and vegetation of Altai* 3: 18–23. [In Russian]
- Davydov EA (2001) Annotated list of lichens of Western part of Altai (Russia). *Novosti sistematiki nizshikh rastenii* 35: 140–161. [In Russian]
- Davydov EA (2004) Additions to Lichen biota of Altai Mounts (Siberia). *Turczaninowia* 7 (4): 47–59. [In Russian]
- Davydov EA (2005) Current data on lichen species diversity of Tigirek State Natural Reserve (West Altai, Russia). *Proceedings of the Tigirek State Natural Reserve* 1: 16–21. https://doi.org/10.53005/20767390_2005_1_16 [In Russian]
- Davydov EA (2008a) Rare and vulnerable species of Lichens in Altaisky krai: new data on distribution and magnitude of populations. Field Meeting «Lichens of Boreal Forests» and the Fourth Russian Lichenological Workshop: Proceedings, Syktyvkar, 40–48. [In Russian]
- Davydov EA (2008b) Rare and vulnerable species of Lichens in Altaisky krai: results of the work under the regional red book and new data on population and distribution. Field Meeting «Lichens of Boreal Forests» and the Fourth Russian Lichenological Workshop: Proceedings, Syktyvkar, 32–39. [In Russian]
- Davydov EA (2010) Current data on lichen species diversity of Tigirek State Natural Reserve (West Altai, Russia). II. *Proceedings of the Tigirek State Natural Reserve* 3: 12–14. https://doi.org/10.53005/20767390_2010_3_12 [In Russian]
- Davydov EA (2011) Lichens of Tigirek Strict Nature Reserve (an annotated checklist). *Proceedings of the Tigirek State Natural Reserve* 4: 69–85. https://doi.org/10.53005/20767390_2011_4_72 [In Russian]
- Davydov EA (2014) The first checklist of lichens, lichenicolous, and allied fungi of Altaisky krai (Siberia, Russia). *Mycotaxon* 127: 67. <https://doi.org/10.5248/127.231>
- Davydov EA (2016) Lichens. In: Shmakov AI, Silantieva MM (Eds) *Red Data Book of Altai Territory. Vol. 1. Rare and endangered species of plants and fungi: Altai State University Press, Barnaul, 209–233.* [In Russian]
- Davydov EA, Konoreva LA (2015) Lichens of North Altai Province (Altaisky krai). *Vestnik Altaiskoy nauki* 1: 197–201. [In Russian]

- Davydov EA, Konoreva LA (2017) New data on lichens from Salair province in Altaisky krai (Siberia, Russia). *Turczaninowia* 20 (4): 185–197. <https://doi.org/10.14258/turczaninowia.20.4.17>
- Davydov EA, Yakovchenko LS, Khrustaleva IA, Elesova NV (2020) Ecological features and population density of protected lichens in forests with spruce, fir and siberian pine on the Salair Ridge (Altai territory). *Problems of botany of Southern Siberia and Mongolia* 19 (2): 275–280. <https://doi.org/10.14258/pb-ssm.2020118>
- Davydov EA, Storozhenko YV, Zyatnina MV, Yakovchenko LS (2021) Ecological preferences and magnitudes of populations of protected lichens in linden forests on the Salair Ridge in Altai Territory. *Acta Botanica Sibirica*. In press.
- Konoreva LA, Chesnokov SV, Davydov EA (2016) *Stictis* and *Schizoxylon* (Stictidaceae, Ostropales) in Russia. *Herzogia* 29 (2): 706–711. <https://doi.org/10.13158/heia.29.2.2016.706>
- Lashchinskiy NN, Safronova TA, Petrova NB, Gorbunova IA, Sedelnikova NV, Pisarenko OY, Lashchinskaya NV (2007) *Flora of the Salair Ridge*. Nauka Press, Novosibirsk, 252 pp. [In Russian]
- Orange A, James PW, White FJ (2001) *Microchemical methods for the identification of lichens*. British Lichen Society, London, 101 pp.
- Sedelnikova NV (2007) Lichens. In: Lashchinskiy NN (Ed.) *Flora of the Salair Ridge*. Nauka Press, Novosibirsk, 98–136. [In Russian]
- Shmakov AI, Silantieva MM (Eds) *Red Data Book of Altai Territory. Vol. 1. Rare and endangered species of plants and fungi*. Altai State University Press, Barnaul, 296 pp. [In Russian]
- Silantieva MM (2013) *The Synopsis of the Altaisky krai flora*. Altai State University Press, Barnaul, 520 pp. [In Russian]
- Stas' EY (1999) The new record of *Ramalina sinensis* (Ramalinaceae, Lichenes) for Altaisky krai. *Turczaninowia* 2 (1): 43–44. [In Russian]
- Vondrák J, Frolov I, Davydov EA, Urbanavichene I, Chesnokov S, Zhdanov S, Muchnik E, Konoreva L, Himelbrant D, Tchabanenko S (2016) The extensive geographical range of several species of Teloschistaceae: Evidence from Russia. *The Lichenologist* 48 (3): 171–189. <http://dx.doi.org/10.1017/S0024282916000116>
- Vondrák J, Frolov I, Davydov EA, Yakovchenko LS, Malíček J, Svoboda S, Kubásek J (2019) The lichen family Teloschistaceae in the Altai-Sayan region (Central Asia). *Phytotaxa* 396 (1): 1–66. <http://dx.doi.org/10.11646/phytotaxa.396.1.1>
- Zavarzin AA, Davydov EA (2000) Lichens from the family Nephromataceae (Peltigerales) in Altai. *Turczaninowia* 3(4): 5–28. [In Russian]