

Electronic supplementary material

UDC 543.07: 615.074

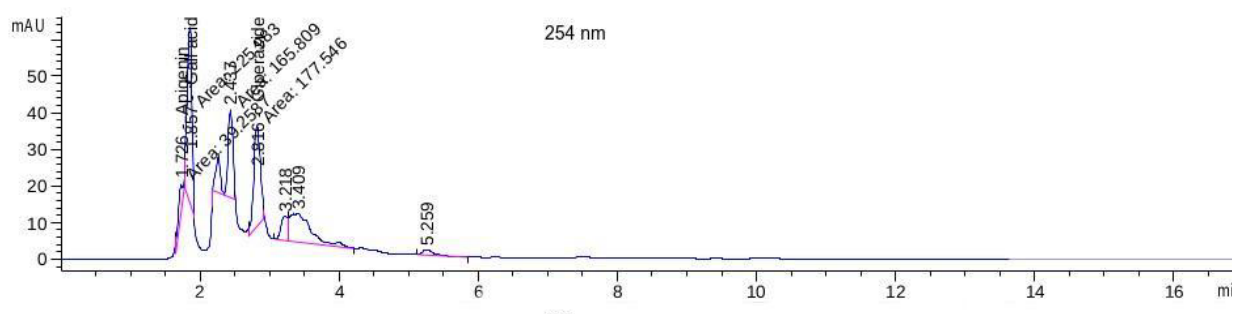
**PHYTOCHEMICAL AND ELEMENTAL PROFILING OF *LIMONIUM OTOLEPIS*
GROWING IN THE FERGANA REGION, UZBEKISTAN: HPLC AND ICP-OES
ANALYSIS***

© ***D. Urmonov*****, ***A. Ibragimov***

*Fergana State University, Murabbiylar str., 19, Fergana, 150100, Uzbekistan,
dadahonu252@gmail.com*

* The full text of the article has been published: Urmonov D., Ibragimov A. *Khimiya Rastitel'nogo Syr'ya*, 2025, no. 2, pp. 184–189.
DOI: 10.14258/jcprm.20250215697.

** Corresponding author.

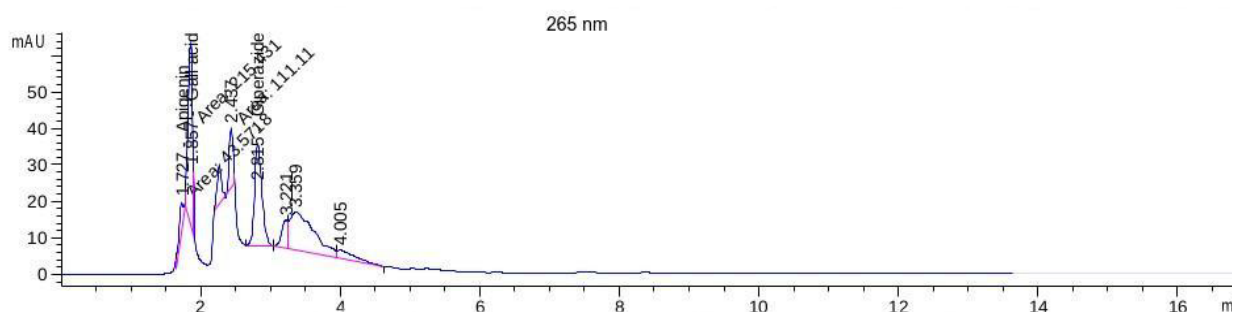


Signal 1: DAD1 A, Sig=254,4 Ref=360,100

Peak #	RetTime [min]	Type	Width [min]	Area [mAU*s]	Area %	Name
1	1.726	MM	0.0788	39.25870	4.7125	Apigenin
2	1.857	MM	0.0791	225.98273	27.1262	Gall acid
3	2.262		0.0000	0.00000	0.0000	Rutine
4	2.437	MM	0.1153	165.80879	19.9031	
5	2.816	MM	0.1086	177.54614	21.3120	Giperazide
6	3.218	BV	0.0956	42.31015	5.0788	
7	3.409	VV R	0.2716	167.89496	20.1535	
8	5.259	BB	0.1648	14.27796	1.7139	

Totals : 833.07943

Fig. 1. HPLC chromatogram recorded at 254 nm, along with the retention times, peak areas, and identities of the detected compounds.

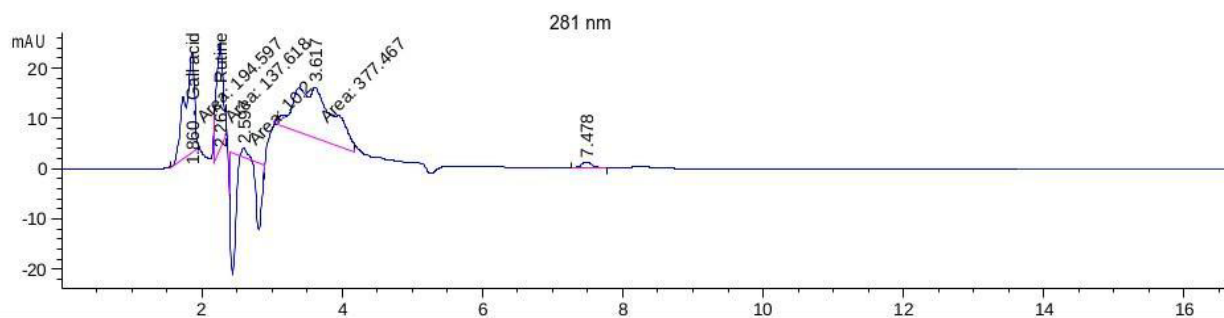


Signal 2: DAD1 B, Sig=265,4 Ref=360,100

Peak #	RetTime [min]	Type	Width [min]	Area [mAU*s]	Area %	Name
1	1.727	MM	0.0842	43.57178	4.7464	Apigenin
2	1.857	MM	0.0727	215.43063	23.4677	Gall acid
3	2.266		0.0000	0.00000	0.0000	Rutine
4	2.437	MM	0.1114	111.10987	12.1036	
5	2.815	BB	0.1116	202.52879	22.0622	Giperazide
6	3.221	BV	0.0884	44.67983	4.8671	
7	3.359	VV	0.3387	258.82431	28.1947	
8	4.005	VB	0.2349	41.84339	4.5582	

Totals : 917.98861

Fig. 2. HPLC chromatogram recorded at 265 nm, along with the retention times, peak areas, and identities of the detected compounds.



Signal 3: DAD1 C, Sig=281,4 Ref=360,100

Peak #	RetTime [min]	Type	Width [min]	Area [mAU*s]	Area %	Name
1	1.733		0.0000	0.00000	0.0000	Apigenin
2	1.860	MM	0.1627	194.59662	26.5946	Gall acid
3	2.262	MM	0.1083	137.61832	18.8077	Rutine
4	2.597	MM	0.0997	10.19998	1.3940	
5	3.146		0.0000	0.00000	0.0000	
6	3.385		0.0000	0.00000	0.0000	
7	3.617	MM	0.6282	377.46732	51.5868	
8	3.945		0.0000	0.00000	0.0000	
9	7.478	BB	0.1595	11.83119	1.6169	

Totals : 731.71341

Fig. 3. HPLC chromatogram recorded at 281 nm, along with the retention times, peak areas, and identities of the detected compounds.